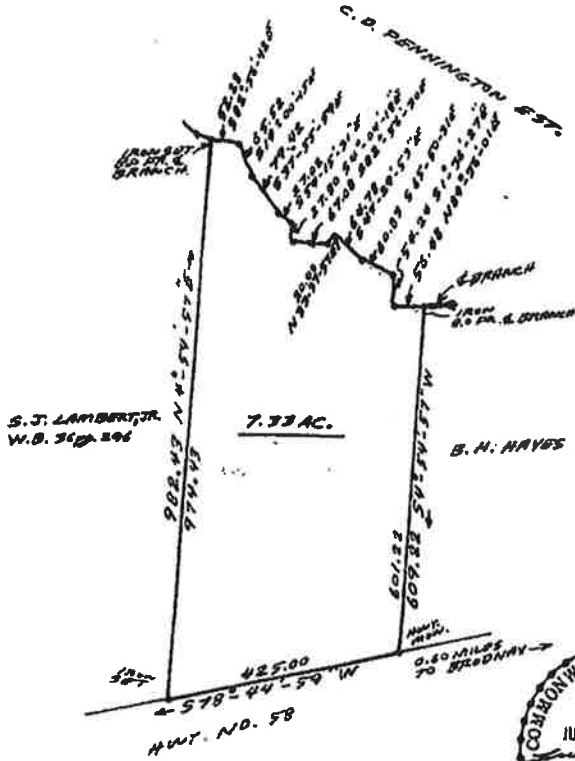


I HEREBY CERTIFY THAT THIS BOUNDARY SURVEY, TO THE BEST OF MY KNOWLEDGE AND BELIEF, IS CORRECT AND COMPLIES WITH THE MINIMUM PROCEDURES AND STANDARDS ESTABLISHED BY THE VIRGINIA STATE BOARD OF ARCHITECTS, PROFESSIONAL ENGINEERS, LAND SURVEYORS, AND CERTIFIED LANDSCAPE ARCHITECTS, *Julian E. Moore*

See deed book 353 page 21 for deed



PLAT OF A PARCEL OF LAND, SITUATED IN LACROSSE MAGISTERIAL DISTRICT, MECKLENBURG COUNTY, VIRGINIA NOW OR FORMERLY BELONGING TO S. J. LAMBERT, JR. WILL BOOK 36 pg. 296

DATE: MAY 7, 1987 JULIAN E. MOORE, INC. LAWRENCEVILLE, VIRGINIA 23066 SCALE: 1" = 200' FILE: 9-337

VIRGINIA: In the Clerk's Office of Mecklenburg Circuit Court the 10th day of July 19 87 at 10:25 A.M. The foregoing instrument together with the certificate of acknowledgment thereon endorsed was this day admitted to record and all state and local taxes paid thereon.

Aug. 11, 1987
E. Warren Matthews
P.O. Box 369
South Hill, VA 23970

Teste: *E. E. Coleman, Jr.*, Clerk